

THE GRAND HOTEL



Eastbourne East Sussex



MEETINGS, INCENTIVES AND EVENTS





The White Palace on the Promenade



The Grand is magnificent and imposing as its name implies. It's exceptional reputation as the UK's premier coastal resort hotel is reflected in every aspect of its quality service, comfort and facilities.

The White Palace on the Promenade, as it is affectionately known, commands stunning sea views with the Sussex coastline stretching to the east and Beachy Head and the beautiful South Downs to the west.

In its illustrious past, The Grand has welcomed guests from royalty to divas and composers, lords of the realm to captains of industry and although preserving its 19th century charm and character, the hotel has been transformed to meet the demands of today's business delegates.





Reputation for grandeur and elegance



The Grand Hotel's reputation for grandeur and elegance is immediately apparent on arrival in the Great Hall, with its impressive marble colonnade, welcoming fire and fine galleries; afternoon tea in this delightful setting with music accompaniment is a must.

The Chatsworth and Concourse Lounges, with views out to sea, provide a tranquil atmosphere for morning coffee, an informal meeting with colleagues or a dinner aperitif.

Many of our 152 rooms and suites enjoy panoramic views of the sea; all are individually designed and luxuriously furnished with attention to the requirements of our business guests.

Dining at The Grand is a delight. The inspired menus created by the chefs in our two award winning restaurants, the Mirabelle and Garden, and the excellent selection of wines from our outstanding cellars, have won numerous awards and an envied reputation.



Board meetings to Grand receptions



All our conference and banqueting facilities are discreetly, yet superbly, organised so as to blend in with the smooth running of the hotel. Importance is placed on meeting the flexibility, comfort and support required for every guest whether it's for a private board meeting, a major product launch or a memorable civil ceremony and reception.

Undeniably one of the most prestigious, self-contained, conference venues in the South of England is our Devonshire Suite, which provides a unique aggregate of resource. Over three floors, the Suite comprises the Compton Room for conferences of up to 300 delegates, the Jevington Lounge with bar, reception area and four syndicate rooms, and the Silverdale Room with a banqueting capacity for up to 200.

A further eleven very individual suites, rooms and galleries are available for various sized functions – a board meeting for 10, a theatre style presentation for 80 delegates to a cocktail reception for 180.

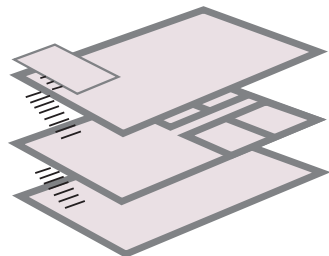


ROOM CAPACITIES

	Theatre	Classroom	Boardroom	Cabaret	U-shape	Private Dining	Reception	Fork Buffet	Wedding License
Devonshire Suite									
Compton Room	300	200	-	120	-	180	400	300	y
Jevington Lounge	-	-	-	-	-	-	200	150	-
Silverdale Room	-	-	-	-	-	200	-	250	-
Princes Room	120	60	40	50	35	72	180	80	y
Dukes Room	80	-	20	30	16	50	80	40	y
Norfolk Room	60	28	24	30	22	48	100	40	-
Arundel Room	70	28	24	40	22	48	100	40	y
Arlington Room	80	45	34	50	30	60	120	60	-
Wilmington Room	-	-	10	-	-	-	-	-	-
Friston Room	-	-	10	-	-	-	-	-	-
Meads Room	-	-	10	-	-	-	-	-	-
The Boardroom	24	-	20	-	12	16	40	20	-
The Galleries	-	-	10	-	-	14	14	14	-

Back projection available for Theatre set up in all rooms.

DEVONSHIRE SUITE
ELEVATION

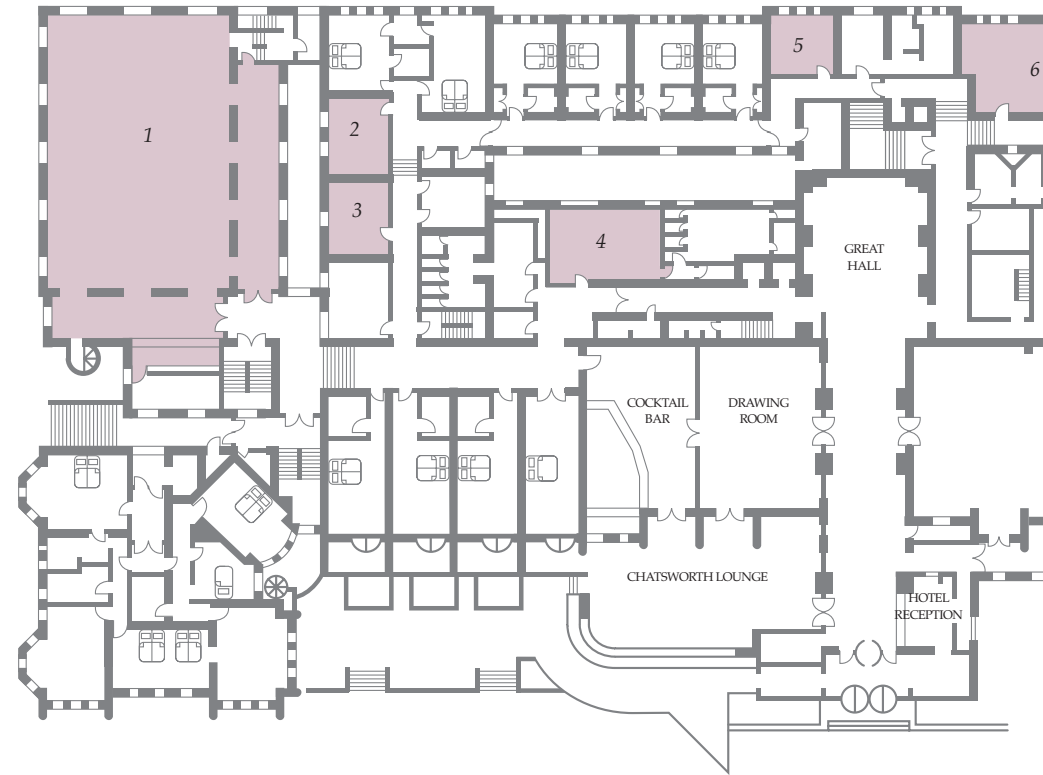


GROUND FLOOR & VIEWING GALLERY COMPTON ROOM

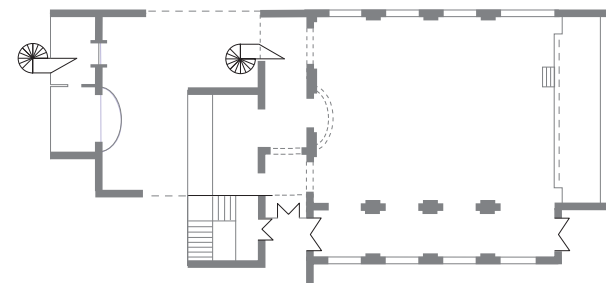
LOWER MEZZANINE FLOOR JEVINGTON & SYNDICATE ROOMS

LOWER GROUND FLOOR SILVERDALE ROOM

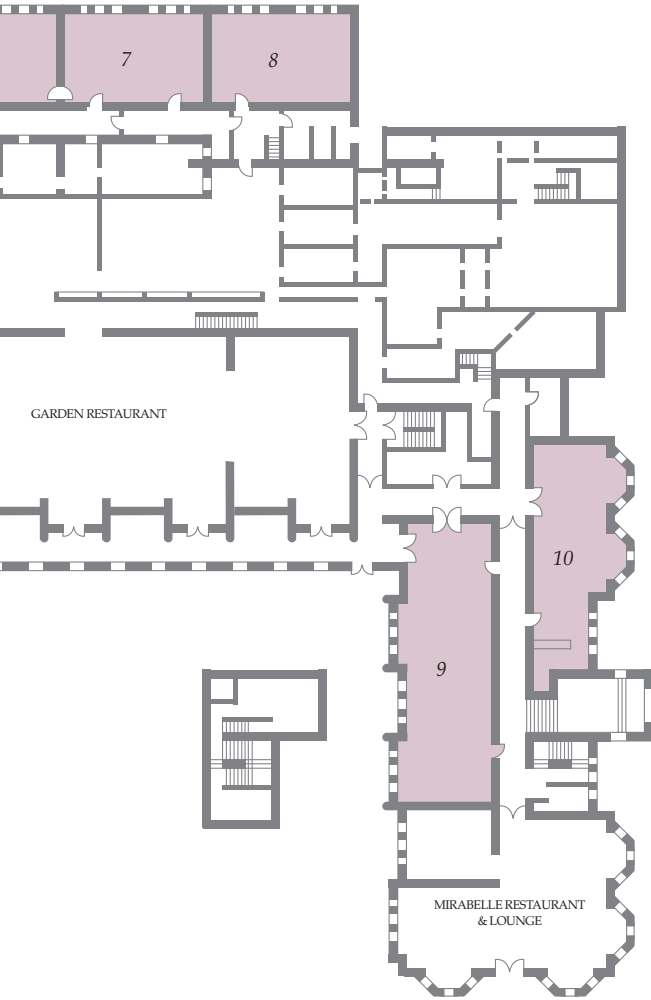
GROUND FLOOR



COMPTON ROOM
GROUND FLOOR

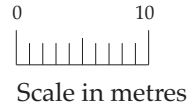


FLOOR PLAN



- 1 DEVONSHIRE SUITE comprising:
Compton Room (20.83m x15.17m)
Jevington Lounge (12.8m x11.4m)
Silverdale Room (19.15m x12.8m)
- 2 WILMINGTON ROOM (4.45m x 4.14m)
- 3 FRISTON ROOM (4.94m x 3.8m)
- 4 BOARDROOM (7.75m x 5.35m)
- 5 MEADS ROOM (4.27m x 4.38m)
- 6 NORFOLK ROOM (8.93m x 7.05m)
- 7 ARUNDEL ROOM (9.77m x 7.05m)
- 8 ARLINGTON ROOM (10.68m x 7.05m)
- 9 PRINCES ROOM (20.17m x 6.02m)
- 10 DUKES ROOM (15.60m x 4.48m)

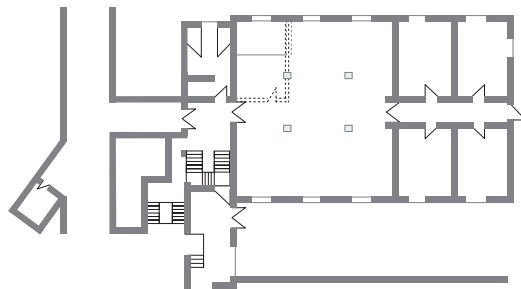
Suite Dimensions: length x width



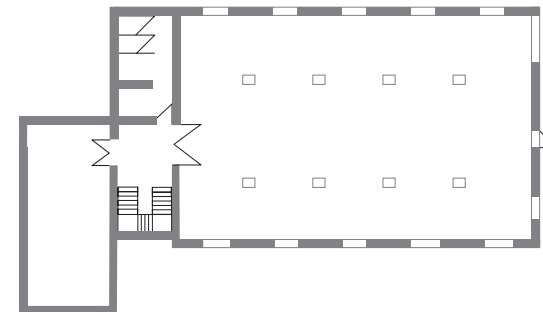
TECHNICAL INFORMATION

	Controls in Rooms	Blackout	Natural Light	3 Phase	13 Amp Sockets	Wifi	Broadband	TV Aerial	Telephone Points	Fax Line	Air-conditioning
Devonshire Suite											
Compton Room	y	y	y	y	38	y	y	y	12	y	y
Jevington Lounge	y	y	y	n	34	y	y	y	13	y	y
Silverdale Room	y	y	y	n	40	y	y	n	11	y	y
Princes Room	y	y	y	n	16	y	y	y	7	y	n
Dukes Room	y	y	y	n	18	y	y	y	2	n	n
Norfolk Room	y	y	y	n	12	y	y	y	8	y	n
Arundel Room	y	y	y	n	14	y	y	y	8	y	n
Arlington Room	y	y	y	n	16	y	y	y	8	y	n
Wilmington Room	y	y	y	n	10	y	y	y	6	y	n
Friston Room	y	y	y	n	8	y	y	y	6	y	n
Meads Room	y	y	y	n	4	n	y	y	2	n	y
The Boardroom	y	y	y	n	14	y	y	n	2	y	y
The Galleries	y	n	n	n	4	n	n	n	1	n	n

JEVINGTON LOUNGE
LOWER MEZZANINE FLOOR



SILVERDALE ROOM
LOWER GROUND FLOOR







Versatility and style for any event



Your event may be complex, the layout of your celebration difficult to imagine or you may be unsure which venue is ideal for that important presentation – our experienced Event Co-ordinators will advise on all aspects of your requirements to ensure your occasion achieves maximum effect.

The Grand Experience offers a range of added extras to further enhance your function.

Add zest to your evening entertainments by adopting a theme – we are happy to discuss your ideas and if you wish to theme your dinner, our chefs will be delighted to create a complementary menu.





Energetic pursuits or pure relaxation



For the energetic the facilities at The Grand's Health Club are truly impressive. There is an indoor swimming pool with whirlpool spa, which is open all year round, and an outdoor heated pool during the summer months, a state-of-the-art gym, health spa with sauna, solarium and steam room, and snooker room.

For those who simply wish to be pampered, the Health Club offers a wide range of massage, manicures and beauty therapies including facial, body and hairdressing treatments. An exclusive new range of signature treatments have been created that will relax and revive, energise and invigorate.

During the summer months, you can totally relax with lunch or snacks on the Chatsworth Terrace overlooking the pool and the sea beyond.



Team sports and activities



An essential aspect of any residential event is leisure time and the location of The Grand allows us to arrange a variety of motorised and sports activities nearby, including off-road racing, golf, tennis at Devonshire Park and team building exercises. If you wish to take to the water, luxury yachts and sailing boats can be hired from Sovereign Marina and, for the more adventurous, rib rafting and water ski-ing can be organised.

Eastbourne's famous beach and pier are on our doorstep, but if you like to explore farther afield including the South Downs National Park, mountain bikes can be hired and coastal and inland walking maps and guides are available from the hotel.



THE GRAND HOTEL

How to get to The Grand Hotel



BY ROAD:

Route A Follow signs on the M25 for M23 (Gatwick Airport/Brighton) then take the M23/A23 towards Brighton, then the A27 to Lewes, then Eastbourne. Follow the signs to the seafront. The Grand Hotel is situated at the western end of the front, opposite the Western Lawns.

Route B Take Junction 6 (Godstone) from the M25 and then take the A22 which leads directly to Eastbourne.

BY RAIL:

A twice hourly service London Victoria to Eastbourne 90 mins.

Direct Rail link from Gatwick Airport to Eastbourne 50 mins.

BY AIR:

Gatwick M23/A23 towards Brighton and then the A27 Brighton to Eastbourne road 50 mins.

Heathrow via M25 anti-clockwise/J7 (Brighton) 1 hour 45 mins.

BY HELICOPTER:

From hotel by prior arrangement.

BY TAXI:

From hotel by prior arrangement.

CAR HIRE:

From hotel by prior arrangement.



The Grand Hotel

★★★★★



King Edwards Parade, Eastbourne, East Sussex, BN21 4EQ
 Telephone + 44 (0)1323 412345 Facsimile + 44 (0)1323 412233
 E-mail: reservations@grandeastbourne.com Website: www.grandeastbourne.com



INVESTOR IN PEOPLE